

SMALL TREES

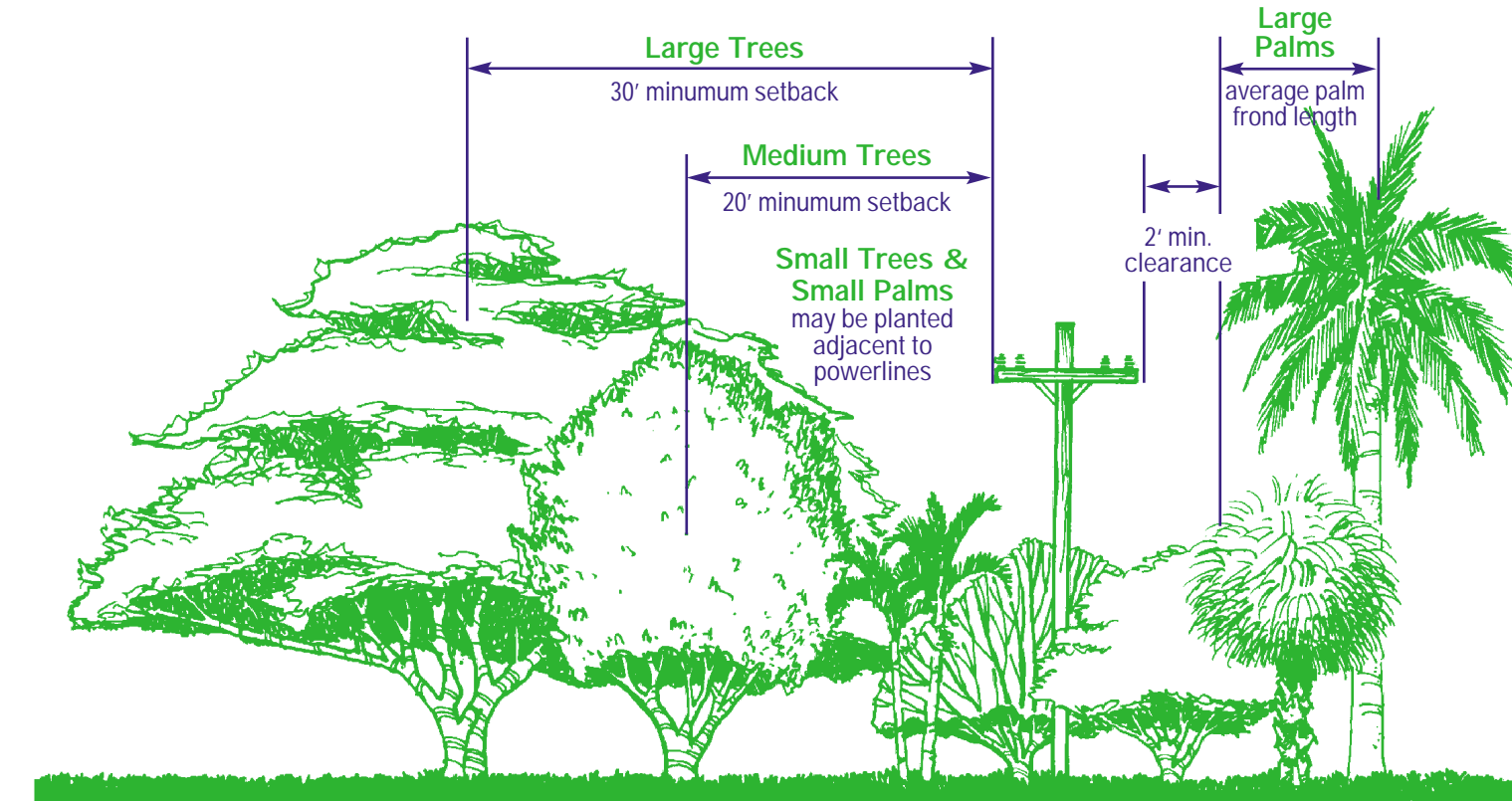
Less than 20' ht. at maturity
Can be planted adjacent to powerlines
For courtyards, patios, entryways, etc.

COMMON/BOTANICAL NAME	ZONE	HEIGHT	COMMENTS
*RED BUCKEYE Aesculus pavia	N	15'-20'	showy red flowers on panicle palmate, buckeye-like leaves
WEeping BOTTLEBRUSH Callistemon viminalis	N,C	15'-20'	red bottlebrush flowers, weeping growth habit
CITRUS: LEMON, ORANGE, ETC. Citrus spp.	C	15'-20'	edible fruit, white flowers, all, except Grapefruit
*HAWTHORN Crataegus spp.	N,C	15'-20'	many species, thorny branches attractive spring flowers
ORIENTAL PERSIMMON Diospyros kaki	N,C	15'-20'	edible large rounded fruit, umbrella-like canopy
LOQUAT Eriobotrya japonica	N,C	15'-20'	edible orange fruit dark green foliage
*CORAL BEAN Erythrina spp.	C	15'-20'	showy, red tubular flowers shrubby, or trained as a tree
*WITCH HAZEL Hamamelis virginiana	N,C	15'-20'	understory shrub or small tree, medicinal lotion from extract
CREPE MYRTLE Lagerstroemia indica	N,C	15'-20'	blooms profusely all summer
*FLORIDA CORKWOOD Leitneria floridana	N	15'-20'	saline, wet habitats light, cork-like wood
TREE LIGUSTRUM Ligustrum spp.	N,C	15'-20'	small white flowers, dark green foliage
*FLOWERING CRABAPPLE Malus spp.	N,C	15'-20'	many species, rose red to white flowers, profuse spring blooms
STAR MAGNOLIA Magnolia stellata	N,C	15'-20'	white starburst flowers, oval, compact canopy
*WAX MYRTLE Myrica cerifera	N,C	15'-20'	tolerates wet soils, aromatic leaves when crushed
OLEANDER "STANDARDS" Nerium oleander	C	15'-20'	pink, coral or white flowers, very poisonous
SWEET VIBURNUM Viburnum odoratissimum	N,C	15'-20'	mildly fragrant white flowers large shrub or small tree

MEDIUM TREES

20'-30' ht. at maturity
20' setback from powerlines
For lawns, parks, shade, etc.

COMMON/BOTANICAL NAME	ZONE	HEIGHT	COMMENTS
*SERVICEBERRY/SHADBUSH Amelanchier arborea	N,C	20'-30'	white flowers, red berries, fall foliage, shrubby or tree
*HOP HORNBEAM Carpinus caroliniana	N,C	25'-30'	understory tree w/ rounded to spreading form
*REDBUD Cercis canadensis	N,C	25'-30'	rosy pink spring flowers, heart shaped leaves
*WHITE FRINGE TREE Chionanthus virginicus	N,C	20'-25'	white flowers in drooping panicle dark purple berries in the fall
*FLOWERING DOGWOOD Cornus florida	N,C	20'-30'	attractive white flower bracts, red fruit in the fall
*SILVERBELLS/HALESIA Halesia diptera	N	20'-25'	white bell shaped spring flowers, attractive deciduous tree
*EAST PALATKA HOLLY Ilex x attenuata	N,C	20'-30'	prominent red berries in fall pyramidal form
*DAHOON HOLLY Ilex cassine	N,C	25'-30'	attractive red berries wet soil native habitat
*YAUPON HOLLY Ilex vomitoria	N,C	25'-30'	attractive dark green foliage red fruit on female plants
SAUCER MAGNOLIA Magnolia soulangiana	N,C	20'-25'	attractive dark green foliage large white to pink spring flower upright oval form
*EASTERN HOP HORNBEAM Ostrya virginiana	N	25'-30'	understory tree w/ irregular canopy, catkins can be messy
JERUSALEM THORN Parkinsonia aculeata	N,C	20'-30'	feathery transparent tree, small yellow flowers, and thorns
PODOCARPUS Podocarpus spp.	N,C	20'-30'	handsome evergreen tree, yew-like in appearance
*CHICKASAW PLUM Prunus angustifolia	N,C	20'-25'	white spring flowers reddish-yellow fruit
JAPANESE FLOWERING CHERRY Prunus serrulata	N,C	20'-30'	white to pink flowers, attractive flowering accent
*BLUEJACK OAK Quercus incana	N,C	20'-30'	spreading growth habit, good species for marginal soils
*DRAKE ELM Ulmus parvifolia 'Drake'	N,C	20'-30'	small, dark green leaves; upright, regular form



SMALL PALMS and CYCADS

Less than 20' ht. at maturity
Can be planted adjacent to powerlines
For courtyards, patios, entryways, etc.

COMMON/BOTANICAL NAME	ZONE	HEIGHT	COMMENTS
PINDO PALM Butia capitata	N,C	10'-15'	blue-gray foliage, cold tolerant feather palm
EUROPEAN FAN PALM Chamerops humilis	N,C	5'-10'	attractive, cold-tolerant, clumping fan palm
ARECA PALM Chrysalidocarpus lutescens	C	15'-20'	excellent hedgerow screen clumping feather palm
QUEEN SAGO Cycas circinalis	C	15'-20'	dark green fronds, round head
KING SAGO Cycas revoluta	C	5'-10'	slow growing cycad, dark green fronds, multi heads with age
PYGMY DATE PALM Phoenix roebellini	C	10'-15'	attractive feather palm, long spines, single or multi stem
*NEEDLE PALM Rhapidophyllum hystrix	N,C	5'-10'	cold tolerant, palmate, clumping palm
*DWARF PALMETTO Sabal minor	N	10'-15'	cold tolerant, fan palm
*SAW PALMETTO Serenoa repens	N,C	10'-15'	cold tolerant, green and silver clumping fan palm
WINDMILL PALM Trachycarpus fortunei	N,C	15'-20'	slow growing, cold tolerant, fan palm

LARGE PALMS

Greater than 20' at maturity
Plant at the average frond length plus 2' for minimum clearance from powerlines.
(#) indicates average palm frond length

COMMON/BOTANICAL NAME	ZONE	HEIGHT	COMMENTS
*PAUROTIS/EVERGLADES PALM Acoelorrhaphe wrightii (5')	C	15'-25'	wet native habitats, clumping fan palm
FISHTAIL PALM Caryota mitis (8')	C	15'-25'	fishtail ends on fronds, clumping feather palm
CHINESE FAN PALM Livistonia chinensis (7')	N,C	20'-30'	weeping fronds, handsome fan palm
CANARY ISLAND DATE PALM Phoenix canariensis (15')	C	35'-50'	thick trunked feather palm stately, classic shape
SENEGAL ISLAND DATE PALM Phoenix reclinata (10')	N,C	25'-35'	clumping specimen feather palm
*CABBAGE/SABAL PALM Sabal palmetto (7')	N,C	45'-70'	state tree of Florida common fan palm
QUEEN PALM Syagrus romanzoffianum (12')	C	40'-45'	attractive feather palm
WASHINGTONIA PALM Washingtonia robusta (7')	N,C	50'-80'	handsome fan palm, reddish trunk when small

LARGE TREES

Greater than 30' at maturity
30' setback from powerlines
For canopy and shade, lawns, parks, etc.

COMMON/BOTANICAL NAME	ZONE	HEIGHT	COMMENTS
*RED MAPLE Acer rubrum	N,C	35'-50'	tolerates wet conditions red fall foliage
*PECAN Carya illinoensis	N,C	80'-90'	edible nut, large deciduous tree
*HACKBERRY/SUGARBERRY Celtis laevigata	N,C	60'-80'	broad oval form, long-lived, tolerates wet conditions
CAMPHOR TREE Cinnamomum camphora	N,C	40'-50'	rounded form w/ dense spreading canopy, messy fruit
*LOBLOLLY BAY Gordonia lasianthus	N,C	30'-40'	handsome upright tree, large white flowers, wet native habitat
*AMERICAN HOLLY Ilex opaca	N,C	40'-50'	leathery dark green foliage, red berries, upright form
*JACARANDA Jacaranda acutifolia	C	40'-50'	attractive lavender-blue flowers, open habit
*BLACK WALNUT Juglans nigra	N,C	60'-70'	edible nut, aromatic leaves, broad, open crown
*SOUTHERN RED CEDAR Juniperus silicicola	N,C	30'-40'	aromatic conifer, attractive Christmas tree shape
GOLDEN RAINTREE Koelreuteria elegans	C	30'-50'	attractive yellow flowers, seipia seed pods, round crown
*SWEET GUM Liquidambar styraciflua	N,C	70'-80'	star shaped leaves, fall color, straight trunk, conical crown
*TULIPTREE/TULIP POPLAR Liriodendron tulipifera	N,C	70'-80'	leaves resemble a tulip, erect, narrow, oval crown
*SOUTHERN MAGNOLIA Magnolia grandiflora	N,C	60'-80'	large fragrant white flowers, dense, upright, pyramidal form
*SWEETBAY MAGNOLIA Magnolia virginiana	N,C	40'-60'	fragrant white flowers, upright, columnar form
*RED MULBERRY Morus rubra	N,C	40'-50'	fruit for wildlife, can be messy, rounded to broad-spreading form
*BLACK GUM/TUPELO Nyssa sylvatica	N,C	50'-90'	moist native habitat upright, pyramidal form
*REDBAY Persea borbonia	N,C	50'-60'	aromatic leaves, upright form, dense canopy
*NORTH FLORIDA SLASH PINE Pinus elliotii var. elliotii	N,C	80'-90'	tall, straight, w/ dark foliage, 2-3 needles/sheath, 7"-12" long
*SPRUCE PINE Pinus glabra	N,C	80'-90'	moist, fertile soil habitat 2 needles/sheath, twisted, wavy
*LONGBEAM PINE Pinus palustris	N,C	80'-90'	upright, oval form, w/open crown. 3 needles/sheath, 10"-15", long
*LOBLOLLY PINE Pinus taeda	N,C	80'-90'	upright, broad, oval crown 3 needles/sheath, 6"-9", long
*SYCAMORE Platanus occidentalis	N,C	90'-95'	large, straight, deciduous tree, shedding bark w/whitish underbark
*CHERRY LAUREL Prunus caroliniana	N,C	30'-40'	tiny white flowers, shiny leaves, upright, oval form
BRADFORD PEAR Pyrus calleryana "Bradfordi"	N,C	30'-60'	small fruit, can be messy, upright, oval form
*LAUREL OAK Quercus laurifolia	N,C	60'-80'	tall, upright form, fast growing, short-lived
*SHUMARD OAK Quercus shumardii	N,C	90'-95'	large, upright oval form, red fall foliage
*LIVE OAK Quercus virginiana	N,C	50'-60'	spreading, grand shade tree, ideal for parks, lawns, etc.
*COASTAL PLAIN WILLOW Salix caroliniana	N,C	30'-40'	wet native habitat, irregular form
*BALD CYPRESS Taxodium distichum	N,C	40'-90'	wet native habitat, conical form when young
*FLORIDA BASSWOOD/FL. LINDEN Tilia floridiana	N,C	30'-70'	heart shaped leaves, drooping off-white flowers
*WINGED ELM Ulmus alata	N,C	65'-75'	mid-sized elm w/rounded crown, "wings" on smaller branches
*FLORIDA ELM Ulmus americana var. floridana	N,C	45'-50'	inverted conical shape, moist hammock habitats

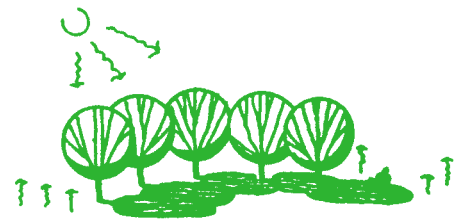
NORTH & CENTRAL FLORIDA

N = North C= Central

*Asterisk denotes plants native to Florida Heights are as per Division of Forestry and Water Management District publications. This list is not all-inclusive. Check with local agencies for appropriateness of species in your area. 'LY' indicates susceptibility to lethal yellowing.



WHY PLANT? Trees and Palms



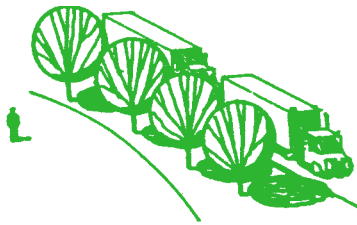
provide shade and cool the air ...



act as wind breaks ...



enhance the streetscape ...



screen objectionable views ...



frame views ...



soften architecture ...



act as a backdrop.

WHY FPL TRIMS TREES

Not all trees are planted in "the right place." Often large trees will grow into close proximity of power lines requiring trimming away from FPL's lines.

Power line maintenance, including tree removal and trimming, benefits everyone by reducing power outages. A single tree that contacts a power line can interrupt electrical power to many people in an area. Overhanging limbs can break and fall into power lines. This is especially critical during storms or periods of high winds.

Overhead utility lines are the easiest to see and probably the ones we take most for granted. Although these lines look harmless enough, they can be dangerous.

Planting tall-growing trees under or near these lines will ultimately require pruning them away from the wires. This pruning may result in a tree having an unnatural appearance. Repeated pruning can lead to a shortened life span of the tree. Trees which must be pruned away from the power lines are under greater stress and more susceptible to insects and disease. Small, immature trees planted today can grow into problem trees in the future. Tall growing trees near overhead lines can cause service interruptions when trees contact wires. Children or adults climbing these trees can be severely injured or even killed if they come in contact with the wires. Proper selection and placement of trees in and around overhead utilities can eliminate potential public safety hazards, reduce expenses for utilities and their customers and improve the appearance of landscapes.

FPL utilizes professional tree crews trained to trim trees in a safe and technically correct manner. The National Arborists Association standards (NAA) and local tree trimming codes are used as guidelines.

Should a tree come in contact with a power line stay clear and call FPL at the number on the bottom of your bill.



NUISANCE and PROBLEM TREES

The following non-native problem trees are prohibited in some municipalities. They can be invasive, damage sidewalks, structures, or utilities, or may be extremely messy. Consult your local forester or agricultural extension agent to "Plant the Right Tree in the Right Place".

EARLEAF ACACIA	Acacia auriculiformis
AUSTRALIAN PINE	Casuarina spp.
MELALEUCA	Melaleuca quinquenervia
BRAZILIAN PEPPER	Schinus terebinthifolius
WOMAN'S TONGUE TREE	Albizia lebeck
NORFOLK ISLAND PINE	Araucaria heterophylla
BISCHOFIA	Bischofia javanica
SCHEFFLERA	Brassaia actinophylla
EAR TREE	Enterolobium cyclocarpum
EUCALYPTUS	Eucalyptus spp.
NON-NATIVE FICUS	Ficus spp.
SILK OAK	Grevillea robusta
CHINESE TALLOW TREE	Sapium sebiferum
JAVA PLUM	Syzygium cumini
CHINABERRY	Melia azedarach



"Plant the **RIGHT TREE** in the **RIGHT PLACE**"
North and Central Florida



Plan Before You Plant

Choose suitable trees and palms for planting around your home, near powerlines, for courtyards, patios, lawns and streetscapes.

PROPER TREE SELECTION

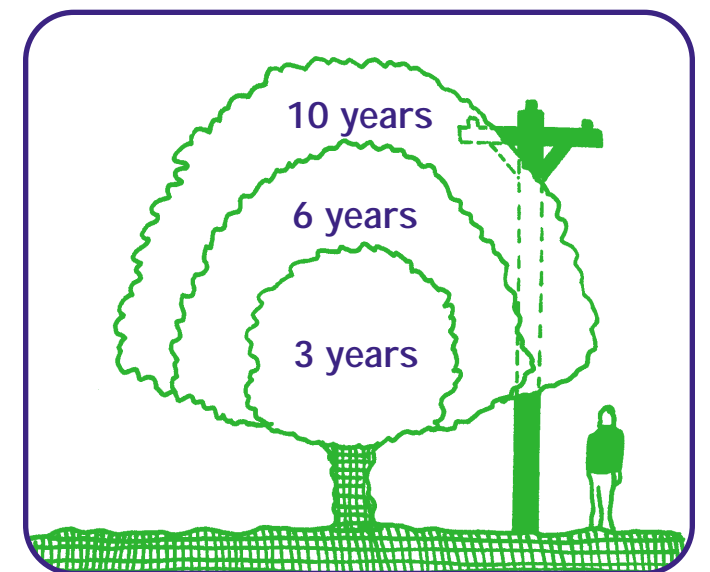
Often, we take our utility service for granted because it has become a part of our daily lives. To enjoy the convenience of reliable electrical service, distribution systems are required to bring electricity to our homes.

The location of these utility lines should play a major role in your tree and planting site selection. The ultimate, mature height and width of a tree to be planted should not exceed the available overhead growing space. It's important to plant the right tree in the right place. Proper tree selection will help to ensure trouble-free electrical service to your home for years to come.

The selection of trees to plant requires careful consideration. Trees planted in the wrong place can cause serious problems such as clogged sewers, cracked sidewalks, and power service interruptions. Planting the right tree in the right place can reduce maintenance expenses for homeowners as well as FPL, while improving the appearance of the landscape.

Consult your tree care professional or garden center staff to help you select the right tree.

In this publication you will find a select list of trees and palms as well as recommendations for planting in relation to utility lines.



Always consider the ultimate mature size when planting.

